



# MARK HALL ACADEMY



## WEEKLY BULLETIN

SPRING TERM - FRIDAY 22 MARCH 2019

### Term Dates 2018-19

#### Spring Term 2019

Monday 7 January—Friday 5 April  
Half Term: 18 February - 22 February  
Staff Training Day—11 January 2019

#### Summer Term 2019

Tuesday 23 April—Friday 19 July  
Half term: 27 May—31 May  
May Bank Holiday: 6 May

### Term Dates 2019-20

#### Autumn Term 2019

Tuesday 3 September—20 December  
Half Term: **21 October —1 November**

#### Spring Term 2020

6 January—3 April 2020  
Half Term: 17 February—21 February

#### Summer Term 2020

20 April—17 July  
Half term: 25 May—29 May  
May Bank Holiday: 4 May

**Please note the highlighted date for Autumn 1/2 term. This is a two week break due to moving into our new building**

### Dates for Your Diary

Monday 25 March	SpringBlast Dance Event	Leave school at 12 noon
Friday 29 March	Jack Petchey Speak Out Challenge	Year 11
Wednesday 3 April	Drop Down Day	Whole School
Monday 1 and Tuesday 2 April	Future DJ's Roadshow Year 7—10 students	Lunch Time
Friday 5 April	End of Term	Students to leave from 12.30 pm

With just two weeks to go until the Easter break we have begun to think about some of the activities that are happening in the last week of term. The main event is the Drop Down Day on Wednesday 3 April. We have had assemblies all this week explaining the different activities that will be available to the students and allowing them to think about what is ahead. Much more to follow next week and something to look forward to.

This week we also had a theatre trip for our year 10 and 11 drama students. This was to allow them to see a live performance first hand. They saw Woman in Black and will have to review the production as part of their GCSE exam. We have also had the first auditions for our own end of year production, which this year is the Little Shop of Horrors. We had lots of keen students hoping to star in the production and we can look forward to some great performances in due course. Many thanks to all our Creative Arts staff in music, drama and art for giving our students these opportunities.

Please do read down the bulletin and have a look at our Praise and Consequence ladders. We have recently made some changes to our consequences to support students to improve their behaviour. If needs be they will be given reminders about their behaviour and should they be given a consequence this will initially focus on a restorative conversation between student and staff to enable students to understand and improve their behaviour. Clearly further sanctions will be given if required but we hope to move to more and more praise points rather than consequences. And with just two weeks to go until the end of term students should be doing all they can to obtain achievement points as these will contribute to certificates and prizes at the end of term assemblies.

On Monday all the students will be given new copies of their timetables. We have been making a few changes to groups to ensure that we are all working to the best of our ability. We have also been making a few additional arrangements, such as changing support groups and intervention groups. By giving all students copies of their timetables there will be no excuses for not knowing where they should be next week.

Have a great weekend.

J Fuller  
Principal

Aspire

Endeavour

Achieve



## Notices / Letters Home / Information on Website

Please click on the links below to view letters that have been emailed or sent home:

<http://www.mha.atrust.org.uk/wp-content/uploads/2019/01/SchoolMoney-letter-Jan-2019-1.doc>

<http://www.mha.atrust.org.uk/wp-content/uploads/2019/02/Work-Experience-Form.pdf>

<http://www.mha.atrust.org.uk/wp-content/uploads/2019/02/WE-Application.pdf>

<http://www.mha.atrust.org.uk/wp-content/uploads/2019/02/WE-letter-for-parents.pdf>

<http://www.mha.atrust.org.uk/wp-content/uploads/2019/02/March-Mock-Parent-Timetable-1.pdf>

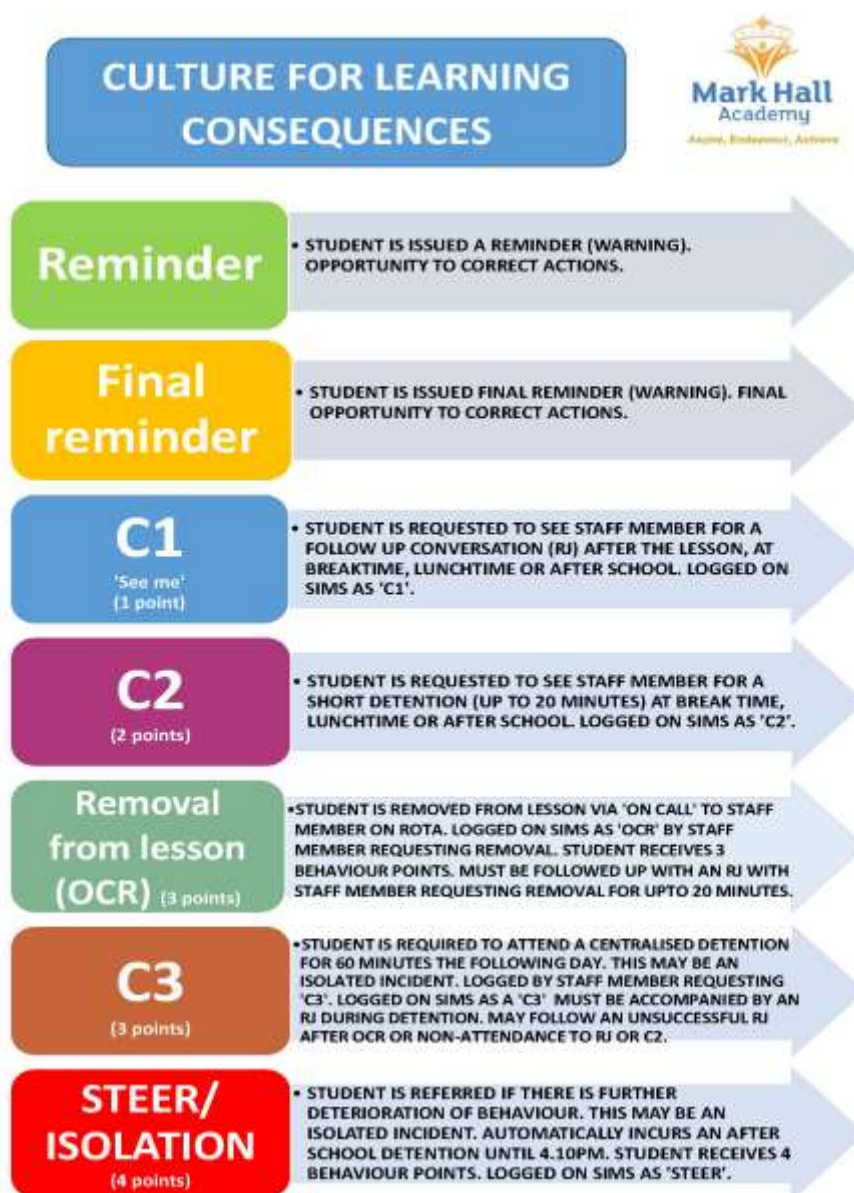
<http://www.mha.atrust.org.uk/wp-content/uploads/2019/03/Mobile-Phones-Exam-Letter-2.pdf>

## Student Behaviour and Consequences (detentions)

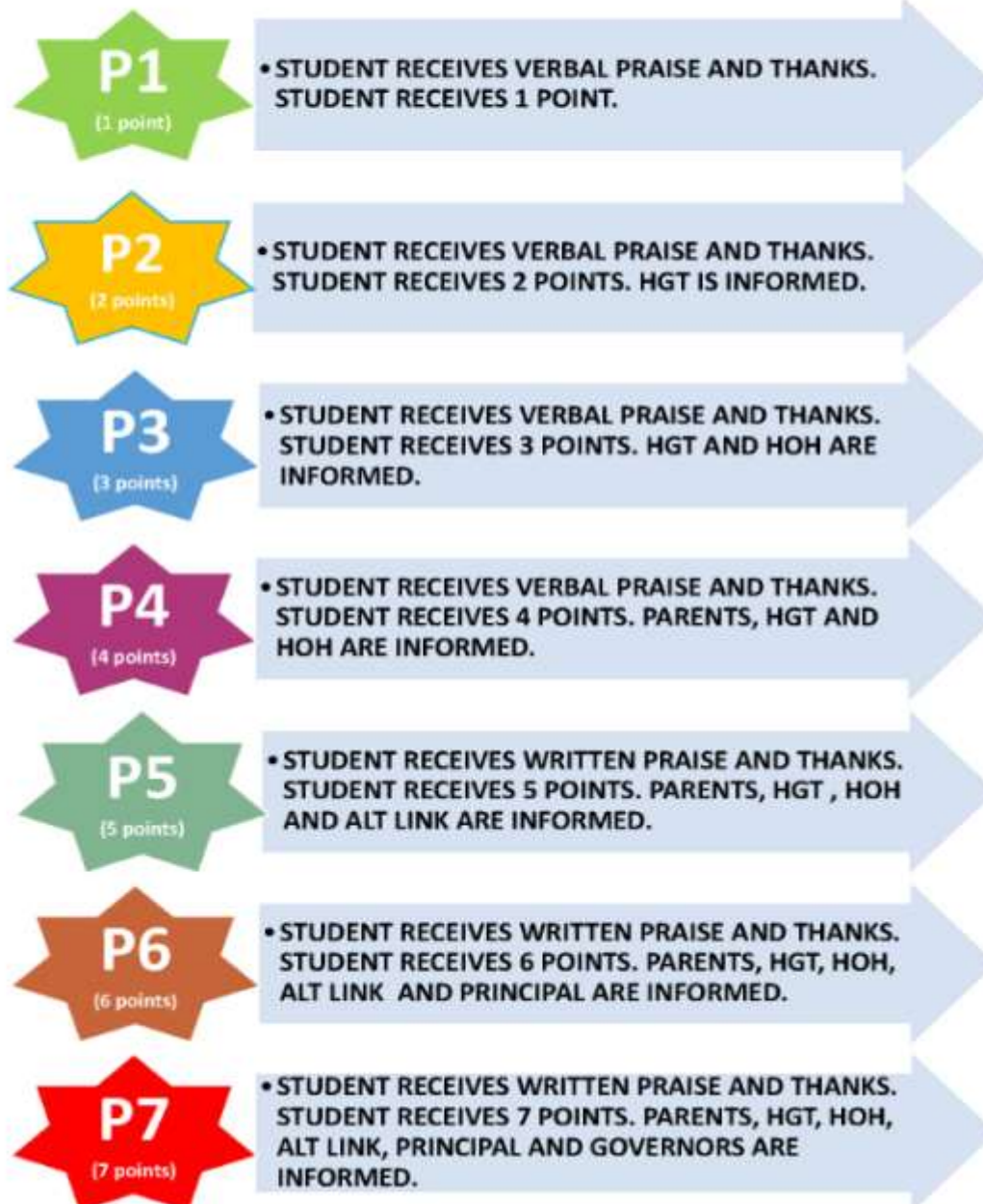
Dear Parents and Carers,

In order to support learning dialogue and conversations between students and staff we have been looking at ways in which we can further build relationships in the Academy. We have therefore tweaked the consequence system allowing opportunities for students to correct their actions in class before being sent to a more senior member of staff.

Thank you for your continued support, Ms Butler, Vice Principal



## CULTURE FOR LEARNING RAISE THE PRAISE





## CALLING YOUNG TALENT!

The Rudolph Walker Foundation are looking for young talent to perform at our event, Friday 29th March 2019.

If you sing, write poetry, play an instrument or have any other talent email [Admin@RudolphWalkerFoundation.com](mailto:Admin@RudolphWalkerFoundation.com)  
Please include a video or link, full name and contact number.



# The Rudolph Walker inter-School Drama Awards Essex

JOIN US FOR AN EVENING OF PERFORMANCES SPECIAL GUESTS AND MORE!

Schools from Epping Forest & Harlow come together for one day on one stage to battle it out! With the help of celebrity mentors, students have written & directed a drama piece to wow our audience and industry judges.

**Epping Forest College, IG10 3SA**  
**Friday 29th March 2019, 6.30pm**

**TICKETS ONLY £2.99**  
**[www.rwisda.com](http://www.rwisda.com)**



Hosted by  
**KAT B**

## Meteor Club



Monday to Friday in the LRC  
3.10pm to 5.20pm

An opportunity for all year groups to get their homework done with support and resources to help.

Free activity of the week is offered once homework is complete, so you can get creative and socialise with students that are not normally in your friendship groups.

Friday - week 2, a film will be shown for you to relax with at the end of the week if you so wish, of course there is still the option to complete homework. Friday – week 1, is the opportunity to write reviews of the films watched to earn rewards scaled to the number of reviews written. Full details of which are displayed in the club.



Film – Sister Act 2

<https://www.youtube.com/watch?v=hgXu9YTV2vQ>


## Academy Menu For week beginning 25 March 2019

GLOBAL ADVENTURE WEEK 1					
	Monday	Tuesday	Wednesday	Thursday	Friday
GLOBAL ADVENTURE	MEXICAN Chicken Molay 93156759  Mexican Yellow Rice * 93156761  Green Beans 93153275	CHINESE Aromatic Soy Pork with Egg Noodles 93070142  Wok Tossed Oriental Vegetables 93130848	MEDITERRANEAN Beef Pasticcio 93160009  Garlic and Herb Bread Wedge * 93119266  Broccoli 93143358	MEXICAN Chicken Tinga Tortilla 93159934  Tomato and Corn Rice 93159972  Apple Slaw 93129265	BRITISH Home-made Battered Fish Fillet 93105116  Chips (oil) 93124814  Baked Beans 93036011 OR Peas 93065563
HIGH STREET FAVES	DEEP SOUTH DINER Bacon Mac n Cheese 93160004	WINGS & THINGS Lemon Piri Chicken Pitta 93156785	DEEP SOUTH DINER Ultimate Cheese Burger 93156800	WINGS & THINGS Special Marinated Roast Chicken Drumsticks with BBO or Sticky Tabasco 93130941	DEEP SOUTH DINER Deep South Turkey Burger 93159954
	Cajun Bean and Feta Burger 93159953	Smoky Cauliflower Cheese 93156770	Sweet Potato & Squash Stew 93101314	Sweetcorn Chickpea Veggie Burger 93153900	Boston Bean Casserole 93130977
	Paprika Potato Wedges (no oil) 93130895	New Orleans Red Bean Rice 93159957	Cajun Potato Wedges (no oil) 93157065	Potato and Onion Hash 93147111	Chips (oil) 93124814
	BBQ Beans 93129227	Chop Chop Salad 93153242	Peas 93065563	Caesar Salad 93129328	Corn Slaw 93153240
SPEEDY ITALIAN	Veggie Supreme Pizza (v) 93135569	3 Cheese Sicilian Pizza (v) 93135631	Hawaiian Pizza 93128494	Bacon Pizza 93041401	Veggie Hot One Pizza (v) 93128498
	Veg Bolognese Pasta (v) 93102889	Arrabiata Pasta (v) 93147953	Chunky Vegetable Pasta 93137661	Beef Lasagne 93046483	Herby Tomato Pasta (v) 93147954
	Margherita Pizza (v) 93041388	Margherita Pizza (v) 93041388	Margherita Pizza (v) 93041388	Margherita Pizza (v) 93041388	Margherita Pizza (v) 93041388

Wholegrain \* Oilv Fish \*\*\*



w/b: Monday 25<sup>th</sup> March 2019



**Furtuitous (adjective)**  
happening by chance rather than intention.  
Mark proved to be fortuitous by selecting all six winning lotto numbers.

Congratulations Mr Kimberley's Year 9 Tutor group (competition for Mr Archer and Mr Hopkins!)

This week's question remember always start with 20 (3 answers needed)

	20	
+15	x 3	+57
-7	-25	÷ 7
+12	÷ 5	+25
-11	+13	Square root
+31	÷ 4	x 20
-17	+36	10% of it
+9	-6	x 4
-22	x 3	+22
+24	+15	÷ 5
-22	÷ 4	+16
???	???	???



**PREPARED**

**POTENTIAL AND PERSEVERANCE**  
Work hard in order to reach your potential.  
ASPIRE, ENDEAVOUR, ACHIEVE.

**RESPECT**  
Treat everyone with RESPECT. STAND UP TO BULLYING.  
RESPECT THE POSSESSIONS OF OTHERS.  
USE Appropriate Language. FOLLOW INSTRUCTIONS FIRST TIME

**EQUIPMENT** is an essential TOOL for learning and the READER TO BRING IT TO EVERY LESSON.

**PLANNERS** THESE NEED TO BE UP TO DATE WITH SIGNATURES, HOMEWORK, NOTES, TARGETS AND POINTS.

**ATTENDANCE AND PUNCTUALITY** Ensure you have EXCELLENT attendance and punctuality every lesson and every day.

**READING BOOKS** Bring in a reading book EVERY DAY. Books should be placed on desks at the beginning of each lesson.

**ENGAGEMENT** Ensure you are focused during Home Group and lessons, complete all classwork and HOMEWORK TO THE BEST OF YOUR ABILITY.

**DRESS IN UNIFORM**  
This should be consistent and of a high standard adhering to the ACADEMY UNIFORM CODE.



**kooth**

**Struggling with self-esteem or bullying?**

Kooth is a free, confidential online counselling service for young people aged 11-26 in Essex

Chat to qualified counsellors who are waiting to support you with whatever you may be experiencing

Aspire

Endeavour

Achieve





## ATTENDANCE = ATTAINMENT

Excellent attendance is important for a number of reasons. It has been proven that those pupils with excellent attendance are more likely to achieve more GCSE's at a higher grade, be less likely to be involved with anti-social behaviour and are generally more settled within school.

*Government Research has shown that where attendance levels fall below 95% a students' academic performance and achievement is badly affected. It is therefore our aim for all our students to have at least 96% attendance or above.*

Mark Hall Academy understands that for some students being in school every single day can be a challenge and we have various reward schemes and incentives to encourage and motivate pupils to achieve excellent attendance. The attendance figures for our Academy have been rising over the last few years and this is a trend we are keen to continue!

The school monitors every child's attendance daily, and the Education Welfare Service monitor our attendance weekly. If your child's attendance is below an acceptable level he/she will be referred to the Education Welfare Service who will contact you.

We are able to provide support or advice to any parent with regard to attendance. Feel free to contact the Attendance Officer at the Academy if you have any questions or concerns regarding your child's attendance.

We look forward to Mark Hall Academy achieving great success with their attendance each and every year and with your child's help we can continue to do so.

## PUNCTUALITY = ATTAINMENT

We value the importance of good punctuality as it also has a valuable impact on the education of children. There are some interesting facts published about punctuality which highlight how lateness can affect your child's learning.

Arriving 5 minutes late every day adds up to **3 days learning** lost in a school **year**

Arriving 15 minutes late every day is equal to **2 weeks learning** lost in a school **year**

Arriving 30 minutes late every day is equal to **19 days learning** lost in a school **year**

## FINALLY .....A REMINDER TO PARENTS/CARERS AND STUDENTS

Just a gentle reminder that all students must be on the school site by **08:40am** ready to make their way to their Home Group rooms for registration beginning at **08:45am**.

The London Road entrance is promptly locked at **08:40am**, therefore students arriving after this time will need to report to the Attendance Officer via the main Academy entrance. Students arriving by bike must allow time to put their bike away in the bike shed before the first bell sounds at **08:40am**. Persistent lateness of students using a bike may result in the Academy requesting an alternative method of travel be made. C3 detentions will be given to any student late in the mornings unless we have received a note or a phone call.

**MARK HALL ACADEMY REALLY VALUE YOUR SUPPORT, SO THANK YOU!**

**Aspire**

**Endeavour**

**Achieve**

## Mark Hall Academy Football Club

All students are welcome to join our Mark Hall Academy Football Club which runs every Wednesday after School. Girls and boys from year groups 5 to 10 are welcome to come and join in




MNA PRESENTS

# Digital Leaders

## Join now!

**WHEN**  
Thursday after school:  
3:10-4:10

**WHERE**  
WEST 1

**WHAT**  
Programming



Dear Students

There will be a display of lost property in Learning Hub every day from 11.10am until 11.30am

You will be able to access this from the West Playground and there will be a sign on the door

As Mark Hall does not have room to keep Lost Property, it will only be held for 1 week before being disposed of.

